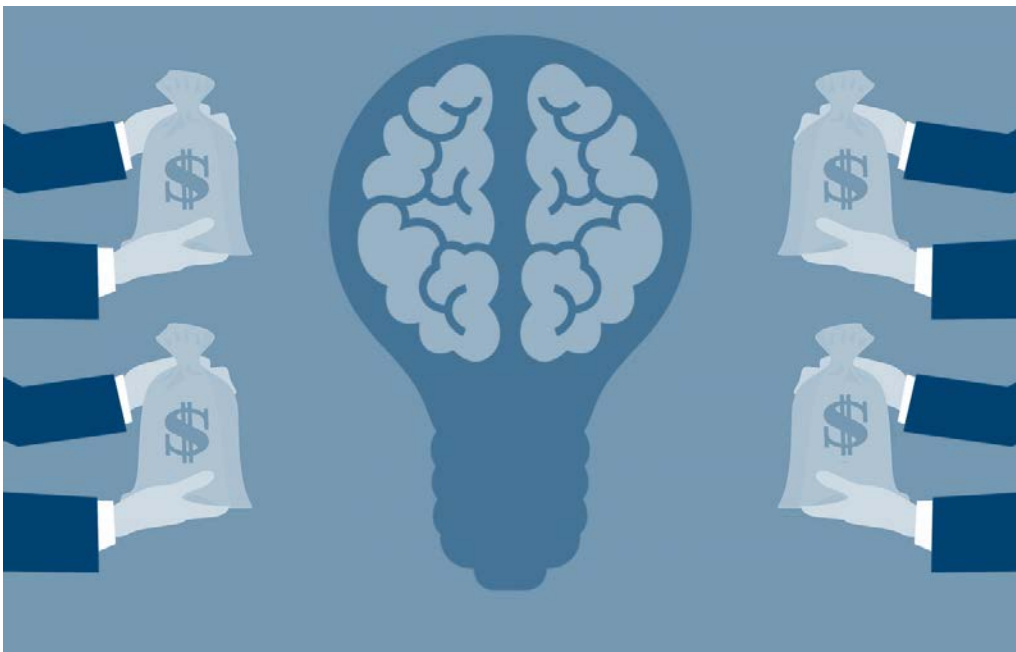


Potential Funding Sources for Organizations



South Carolina Department of Alcohol and Other Drug Abuse Services

Division of Prevention and Intervention Services

November 2020

Table of Contents

Contents

South Carolina Foundations	3
National Foundations – Public Health Funders	6
State & National Grant and Business Opportunities	16



South Carolina Foundations

Anderson Foundations

- [Foothills Community Foundation](#)
- [Outdoor Dream Foundation](#)
- [WebbCraft Family Foundation](#) - Belton

Beaufort Foundations

- [Historic Beaufort Foundation](#)
- [Nemours Wildlife Foundation](#)

Charleston Foundations

- [ASCEND Foundation](#)
Based in Charleston, the Anne Scandalios Cancer Ends Now Directive Foundation works to make cancer awareness a national priority using initiatives in cancer education, awareness, and prevention.
- [Citadel Foundation](#)
- [Coastal Community Foundation](#)
Helping people in the Lowcountry make an impact on their communities through permanent funds for charitable giving.
- [The Lonon Foundation](#)
The mission of this Mount Pleasant based organization is to help children affected by a parent or caregiver's cancer find comfort, heal and grow from their shared experiences through free monthly events.
- [Melinda A. Carter Foundation](#) - North Charleston
- [MUSC Foundation for Research Development](#)

Columbia Foundations

- [AIDS Benefit Foundation of South Carolina](#)
This foundation raises money and distributes grants to those helping others with issues that arise from the disease HIV/AIDS.
- [Central Carolina Community Foundation](#)
- [James F. Byrnes Foundation](#)

- [Midlands Technical College Foundation](#)
- [Saluda Charitable Foundation - West Columbia](#)

Georgetown Foundations

- [Frances P. Bunnelle Foundation](#)
- [Winyah Rivers Foundation](#)

Greenville Foundations

- [AidJoy](#)
This foundation uses media, finance, and technology to help other nonprofits build capacity in order to solve dire humanitarian problems.
- [Chapman Foundation](#)
The mission of this Greenville-based organization is to provide educational opportunities by providing college scholarships for underprivileged students.
- [Community Foundation of Greenville](#)
Brings individuals, businesses, and charitable organizations together to provide resources to improve the lives of Greenville County residents.

Greenwood Foundations

- [Self Family Foundation](#)

Hilton Head Island Foundations

- [Community Foundation of the Lowcountry](#)

Lancaster Foundations

- [J. Marion Sims Foundation](#)

Myrtle Beach Foundations

- [Fans of America Foundation](#)
This Longs-based organization is raising funds to assist military, veterans, and first responders.
- [Guy Daniels Memorial Foundation](#)
Based in Surfside Beach, the Guy Daniels Memorial Foundation is dedicated to promoting clean beaches, environmental conservation, and helped students achieve their higher education goals.
- [Waccamaw Community Foundation](#)

- [Winyah Rivers Foundation](#)

Rock Hill Foundations

- [York County Community Foundation](#)

Spartanburg Foundations

- [Mary Black Foundation](#)
- [Spartanburg County Foundation](#)
- [Upstate Stand Down](#)
Organizes services to aid homeless veterans across the Upstate.

Statewide, Regional Foundations

- [Auntie Karen Foundation](#)
This organization is creating outreach programs for youth.
- [Carolina Gold Rice Foundation](#)
- [Foundation for the Carolinas - Charlotte](#)
- [Sisters of Charity Foundation of South Carolina](#)
- [South Carolina Christian Foundation](#)
The SCCF works to support Christian non-profit organizations across the state.
- [South Carolina Ovarian Cancer Foundation](#)
The SCOCF is dedicated to saving the lives of South Carolina women by educating them on the warning signs of ovarian cancer, actively supporting those diagnosed with the disease, and encouraging research.

Source: <https://www.sciway.net/org/foundations.html>

National Foundations – Public Health Funders

AARP FOUNDATION

The philanthropic arm of the over-50 advocacy group takes a rigorous, evidence-based approach to its grantmaking; funding interests in health include food security, nutrition education and prevention of isolation.

ADOBE FOUNDATION

Adobe's public health grants concentrate on domestic violence, homelessness, food insecurity and families in crisis.

AETNA FOUNDATION

The Aetna Foundation is a key funder of programs that address racial and ethnic health disparities and health equity initiatives in underserved communities.

AGUA FUND

The Agua Fund supports programs that help the elderly to age with dignity, as well as those that promote health among Native Americans, in Washington D.C. and nationally.

ALBERTSONS COMPANIES FOUNDATION

The foundation's public health grantmaking supports work in child hunger eradication, nutrition education, and diet-driven healthy lifestyles.

ALLEN FOUNDATION

Its focus is nutrition education, research and training that emphasize connections between diet and health. Allen gives in the U.S. and internationally, with extra consideration for its founder's home state of Michigan.

AMERICAN LEGION CHILD WELFARE FOUNDATION

The American Legion Child Welfare Foundation supports the physical, mental, emotional, and spiritual well-being of children in the United States. In the public health space, this funder centers on bullying, family conflict, and youth violence.

AMERICAN MEDICAL ASSOCIATION FOUNDATION

This foundation awards public health grants to foster healthy behaviors in young people. It also gives grants to physician-led free clinics that improve access to healthcare in low-income communities.

ANTHEM FOUNDATION

Anthem’s grants focus on anti-smoking and smoking cessation programs, maternal and newborn health, obesity in children and older adults, and promoting healthy and active lifestyles.

ARGOSY FOUNDATION

The Argosy Foundation’s public health grantmaking typically supports organizations working to build healthier local communities, food pantries, and those providing low-cost direct healthcare services.

ARNOLD VENTURES

The Arnold Foundation supports research and other programs relating to the opioid epidemic, reproductive health and access, drug and medical pricing, and general health care access.

AT&T FOUNDATION

The AT&T Foundation supports public health organizations located within AT&T service regions.

BANK OF AMERICA CHARITABLE FOUNDATION

The Bank of America Charitable Foundation, the philanthropic arm of the international bank, seeks to “address critical issues facing our neighborhoods and communities,” including the support of healthy food access in cities and states where the bank does business.

BLUE SHIELD OF CALIFORNIA

The Blue Shield Foundation of California focuses its grantmaking on access to healthcare, healthcare coverage, and combating domestic violence in California.

BNSF RAILWAY FOUNDATION

BNSF Railway Foundation concentrates on chemical dependency treatment and prevention, spousal and child abuse, and women and children's transitional shelters.

OTTO BREMER TRUST

Based in Minnesota, most of Bremer’s grants stay within the state. The trust's interest in public health is broad, generally focusing on the overall health and wellbeing of local communities.

HOWARD G. BUFFETT FOUNDATION

Buffett supports public health matters as they relate to food security. Grants focus on agricultural resource development to help smallholder farmers and benefit vulnerable communities.

VIRGINIA WELLINGTON CABOT FOUNDATION

Cabot's public health grantmaking interests are broad. In the past, it has supported projects that address domestic violence, healthy living, access to healthcare, and emergency shelter organizations.

THE CALIFORNIA ENDOWMENT

The California Endowment's giving related to public health is relatively broad, covering everything from community safety to student health and wellness. The endowment focuses on 14 neighborhoods across California.

THE CALIFORNIA WELLNESS FOUNDATION

The California Wellness Foundation supports a broad range of health and wellness initiatives among underserved communities. It is the go-to funder for California-specific health programs and research.

CAMBIA HEALTH FOUNDATION

The Cambia Health Foundation focuses its public health grantmaking on children's health, access to healthcare and palliative care.

CARDINAL HEALTH FOUNDATION

The Cardinal Health Foundation's main grantmaking priorities in the public health space include prescription drug misuse, health and wellness in local communities, and helping caregivers improve the overall health and wellbeing of young children.

CARGILL INC.

Cargill's public health grants focus on food security, food waste, nutrition, and food safety.

ANNIE E. CASEY FOUNDATION

Casey gives public health grants to projects advancing child welfare, promoting family financial stability, and improving outcomes for juvenile offenders.

MARGUERITE CASEY FOUNDATION

Marguerite Casey Foundation's public health funding goes mainly toward work in food security, community health and access to health care.

CATERPILLAR FOUNDATION

Continuing with efforts to break the cycle of poverty, Caterpillar's public health giving goes to food security and affordable housing. Grantseekers do best when they target root causes of poverty.

CATHAY BANK FOUNDATION

The bank's charitable arm supports health causes in the states where it has a business presence. Areas funded include diabetes, obesity, asthma, fitness and nutrition.

CIGNA FOUNDATION

The health giant's charitable arm backs community health efforts, particularly for children and families. Many grants are modest, but smaller groups should find the funder approachable.

CISCO SYSTEMS FOUNDATION

The Cisco Foundation's public health giving provides grants to meet basic human needs like food, water, shelter, and healthcare in underserved communities.

CIVILIAN RESEARCH AND DEVELOPMENT FOUNDATION

The CRDF's public health grantmaking funds research that fosters international collaboration to prevent, diagnose, and treat diseases.

COCA-COLA FOUNDATION

When it comes to public health issues, the Coca-Cola Foundation likes water stewardship (national and international) and supporting healthy and active lifestyles.

COLORADO HEALTH FOUNDATION

The Colorado Health Foundation gives primarily to school health programs and community nonprofit organizations to expand nutrition and exercise programs. The foundation also supports the ACA.

COMER FAMILY FOUNDATION

Comer's national public health grants target health issues of injection drug use through syringe exchanges and other measures. For the Chicago area, it also supports home health care models.

COMMONWEALTH FUND

The Commonwealth Fund supports groups that increase access, quality, and efficiency in healthcare systems. The fund focuses on improving health outcomes for vulnerable and marginalized populations.

CVS HEALTH FOUNDATION

The CVS Health Foundation's public health grants focus on smoking cessation and expanding access to quality health care.

DE BEAUMONT FOUNDATION

The de Beaumont Foundation supports organizations addressing unmet needs and gaps in the public health space.

DOMINION FOUNDATION

The Dominion Foundation’s public health-related grants focus on meeting basic human needs and improving community vitality in the states in which the company has a presence.

MAX AND VICTORIA DREYFUS FOUNDATION

Dreyfus is agnostic about the types of programs it supports—it's open to any U.S.-based 501(c)(3) organization that can make a strong case that Dreyfus support will make a big difference to their public health program.

DORIS DUKE CHARITABLE FOUNDATION

Doris Duke focuses its grantmaking on the healthy development of young children as well as the prevention of child abuse and neglect.

DUKE ENDOWMENT

The Duke Endowment focuses its public health-related grantmaking primarily on child care and healthcare in North and South Carolina.

GANNETT FOUNDATION

Gannett invests in public health projects that serve local communities.

GE FOUNDATION

Public health grants focus on increasing and improving access to healthcare, particularly in underserved communities across the U.S. Also makes grants targeting specific diseases.

GENERAL MILLS FOUNDATION

The General Mills Foundation awards grants to support children’s health and fitness initiatives in the communities in which the General Mills company operates.

GENERAL SERVICE FOUNDATION

Women's reproductive health and rights, including the right to choose, are the focus here. The main beneficiary populations are women of color, young women, and women with low income.

LISA AND DOUGLAS GOLDMAN FUND

The Lisa and Douglas Goldman Fund supports efforts to promote reproductive health and rights in the Bay Area and nationally.

GROVE FOUNDATION

In public health, Grove supports smaller community-based outfits. Focus is on access to social services, and sexual/reproductive health and rights. Anti-domestic violence also figures.

JOHN A. HARTFORD FOUNDATION

The John A. Hartford Foundation awards public health grants to organizations that are changing healthcare delivery systems, lowering costs, and improving outcomes for older adults and their families.

HEARST FOUNDATIONS

Hearst awards grants to improve access to quality healthcare for low-income populations and supports social service groups that are tackling root problems of poverty and pressing social challenges.

HEXBERG FOUNDATION

No specific public health grant programs here, but modest sums go to groups that address homelessness, abuse of children and young adults, food insecurity, and domestic abuse.

HIGHMARK FOUNDATION

The Highmark Foundation's public health grants focus on increased physical activity, improved nutrition, and anti-bullying efforts. Special funding attention is given to childhood obesity and anti-bullying programs.

W.K. KELLOGG FOUNDATION

The W.K. Kellogg Foundation's public health-related giving revolves around food security and the overall health and well-being of children, as well as studying health disparities and closing those disparity gaps.

KRESGE FOUNDATION

Kresge keeps its public health funding pretty tight, focusing on alleviating urban poverty and reducing healthcare disparities in underserved communities.

KROGER COMPANY FOUNDATION

The Kroger Company Foundation invests in organizations in communities where its corporate sisters Kroger and Kroger brand companies operate.

LALOR FOUNDATION

The Lalor Foundation focuses its public health grantmaking on young women’s access to sexual and reproductive health information, including impartial information about contraception and pregnancy termination.

EUGENE M. LANG FOUNDATION

The Eugene M. Lang Foundation funds programs that expand health care access, as well as research into Alzheimer’s and Parkinson’s Disease, as part of its health and aging grantmaking.

LANGELOTH FOUNDATION

The Langeloth Foundation supports organizations that take a public health approach to ending the cycle of violence at the community level.

LAWRENCE FOUNDATION

Lawrence prefers a broad-approach to its public health grantmaking, and as a result, does not support specific public health concerns. However, it often supports projects that address food insecurity.

LOEB FAMILY - THIRD POINT FOUNDATION

Run by hedge fund billionaire Daniel S. Loeb and his wife Margaret M. Loeb, this funder gives modestly to a mix of health causes, including reproductive health, wellness, and some traditional disease outfits.

MAINE HEALTH ACCESS FOUNDATION

The Maine Health Access Foundation (MeHAF) centers its grantmaking on promoting access to quality healthcare for uninsured and underserved populations in Maine.

MARCUS FOUNDATION

Marcus's public health grantmaking food insecurity and systematic challenges associated with hunger.

MAXIMUS FOUNDATION

The MAXIMUS Foundation focuses its public health related grants on access to healthcare in low-income, disadvantaged and marginalized communities.

MEDTRONIC FOUNDATION

Medtronic directs its grantmaking toward expanding access to healthcare and chronic disease management in underserved populations both in the U.S. and abroad.

GORDON AND BETTY MOORE FOUNDATION

The Gordon and Betty Moore Foundation awards health-related grants via its Patient Care Program, which strives to make patient and family engagement a reality within the U.S. healthcare system.

STEWART R. MOTT FOUNDATION

The Stewart Mott Foundation is a small, but strategic funder that is primarily concerned with nuclear proliferation and overpopulation.

NEW PROFIT

New Profit's public health priorities are still emerging. For now, the general focus seems to be on youth health initiatives and breaking the brutal cycle of poor health caused by poverty.

NEW YORK STATE HEALTH FOUNDATION

This foundation is committed to improving the health outcomes of the people of New York, focusing on encouraging healthy lifestyles and increasing access to affordable, quality healthcare.

JESSIE SMITH NOYES FOUNDATION

New York-based Noyes' public health grants seek to protect and expand access to reproductive health services and information. Most grants fund local/grassroots health and rights groups.

OMRON FOUNDATION

The Omron Foundation awards public health related grants for basic needs.

DAVID AND LUCILE PACKARD FOUNDATION

Packard does not have a specific public health grantmaking program. But its giving priorities demonstrate strong connections to the health and well-being of its target populations as a whole.

POSES FAMILY FOUNDATION

Poses doesn't have a specific public health program, but gives widely to groups working in domestic violence, food security and homelessness.

PPG INDUSTRIES FOUNDATION

PG Industries prefers a broad approach to its public health-related grantmaking. As a result, it supports a variety of issues, which includes hunger relief, and combating homelessness and poverty.

PRITZKER TRAUBERT FAMILY FOUNDATION

The Pritzker Traubert Family Foundation (PTFF) focuses on promoting the well-being of Chicago's children and supports fitness-related childhood obesity initiatives, mainly in the Chicagoland area.

KATE B. REYNOLDS CHARITABLE TRUST

Reynolds invests 75 percent of its annual giving to health and wellness initiatives for underserved, economically disadvantaged and vulnerable North Carolinians.

SCHERMAN FOUNDATION

The Scherman Foundation's public health giving centers on women's reproductive rights and justice.

MAY AND STANLEY SMITH CHARITABLE TRUST

The Smith Trust gives most of its public health grants through its focus areas on the elderly and people with disabilities. It funds programs in 14 states in the Western U.S., as well as British Columbia, Canada.

STEELE-REESE FOUNDATION

Steele-Reese's public health grants go to rural healthcare and human and social services.

TARGET CORPORATION

The giant retailer's philanthropic giving is focused on wellness. Its mission statement says, "Wellness begins where people live, learn, work and play."

TOW FOUNDATION

Tow's major grantmaking efforts focus on juvenile incarceration and justice, which is a unique public health issue in and of itself. Grantmaking is largely restricted to New York and Connecticut.

UNITED HEALTH FOUNDATION

The charitable arm of UnitedHealth Group supports diverse public health groups concerned with access, outcomes, disease prevention and management, aging, and promotion of active lifestyles in communities.

VERIZON FOUNDATION

The Verizon Foundation's public health-related giving focuses on the application of technology to address important healthcare matters and domestic violence prevention.

VNA FOUNDATION

VNA's grants focus on home healthcare services, community healthcare services, primary care and chronic disease management, and health promotion. It gives nearly all awards to groups located in Chicago.

WALMART FOUNDATION

The Walmart Foundation awards public health grants toward hunger relief and healthy eating. The foundation also donates a boatload of products. Grants range from \$250 up to \$250,000. Amounts vary by program.

WESTWIND FOUNDATION

Westwind's public health grants are primarily concerned with reproductive health and rights, giving much of its funding to sex ed programs for adolescents.

ROBERT WOOD JOHNSON FOUNDATION

RWJF has multiple public health programs ranging from communicable disease prevention to health care disparities. RWJF funds organizations of all sizes.

YOUTH FOUNDATION

The Youth Foundation invests in projects that encourage healthy and active lifestyles amongst youth. It also supports organizations that improve or renovate existing buildings, grounds, and equipment that hope to encourage active lifestyles.

Source: <https://www.insidephilanthropy.com/public-health-fundraising>

State & National Grant and Business Opportunities

South Carolina Department of Education Grant Opportunities:

<https://ed.sc.gov/finance/grants/scde-grants-program/scde-grant-opportunities/>

South Carolina Business Opportunities: <https://scbo.sc.gov/online-edition>

Federal Grant Opportunities: <https://www.grants.gov/>

Federal Contract Opportunities (FBO): <https://beta.sam.gov/>